



Bloque de 3 pisos con garaje y amarre de 20x6m

Building for sale Empuriabrava, 3 flats, large garage and mooring of 20x6m.

Building for sale Empuriabrava, 3 flats, large garage and mooring of 20x6m.

Building consisting of a semi-basement floor (garage) and 3 floors with three flats, one of which is a duplex.

Located in Port Salins, next to the beach.

ENTITIES:

- 1) Garage of 90m² with access to the 20x6m mooring.
- 2) Ground floor flat (1 bedroom) of 48m² + 12m² terrace.
- 3) First floor flat (2 bedrooms) of 64m² + 12m² terrace.
- 4) Duplex flat (3 bedrooms) of 156m² + 32m² of terraces + 24m² of solarium.

The price indicated does not include taxes or fees (TVA, registration fees, notary fees,

1.175.000 €



395 m²



150 m²



Yes



Yes



6



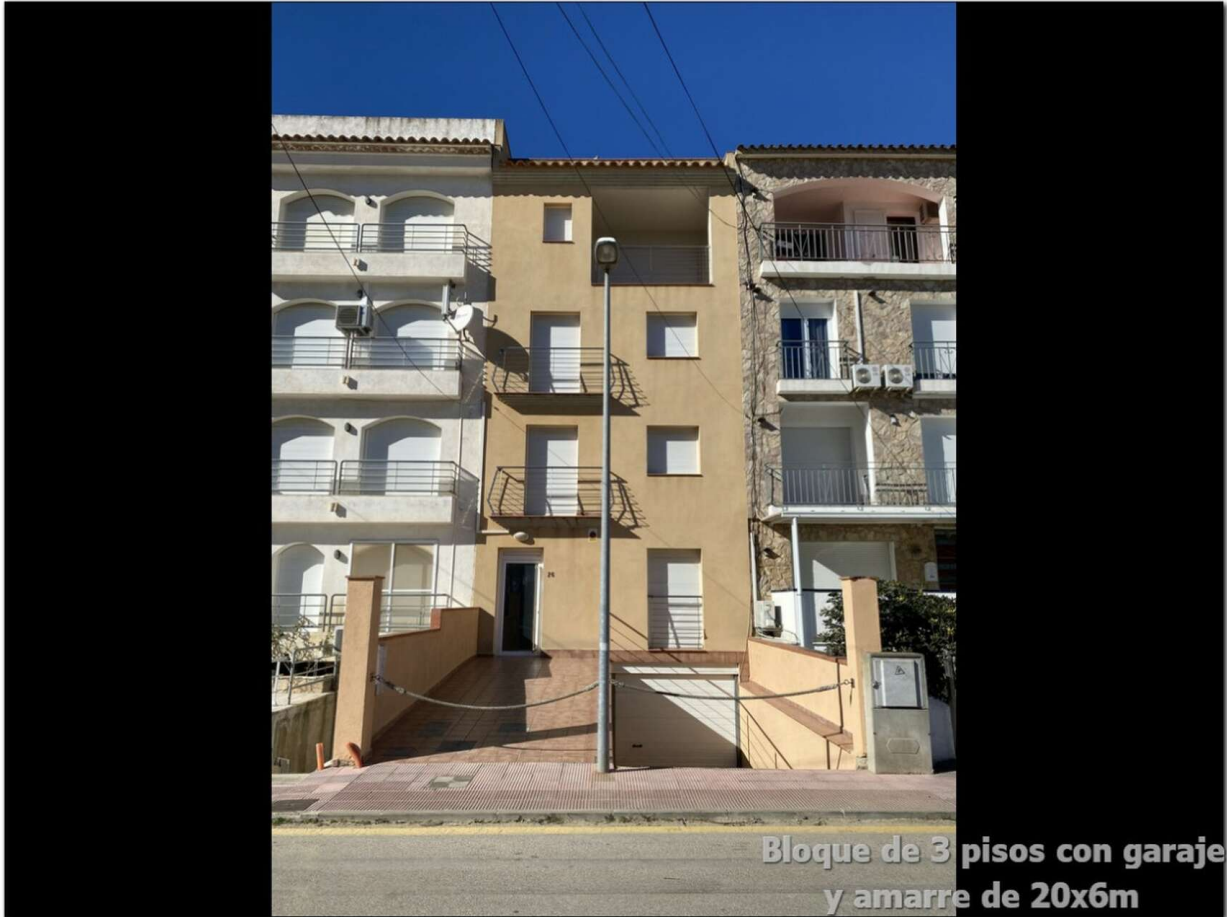
4



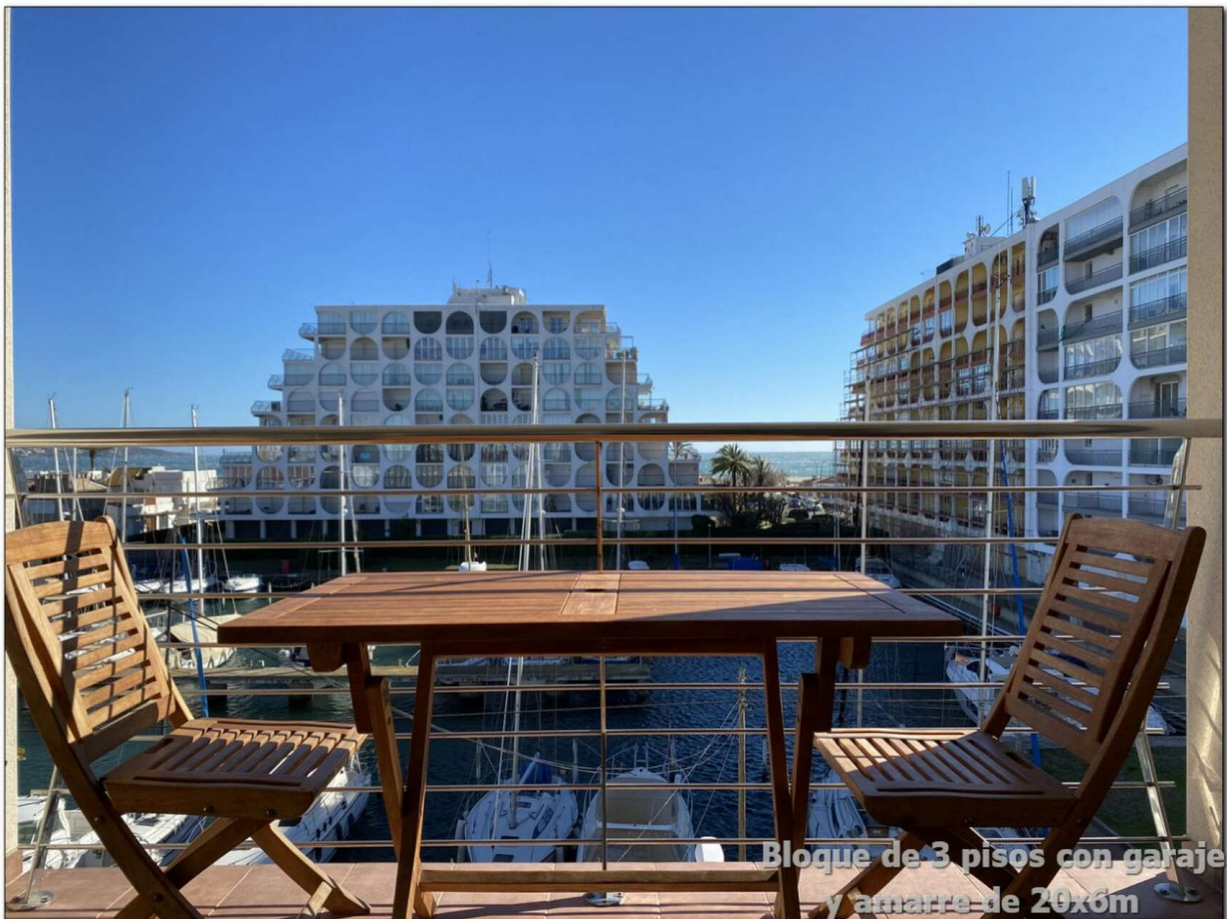
F - F

registration fees). The informations and surfaces are not given as titre indicatif.

Transaction:	Sale	Category:	Building
Situation:	Empuriabrava	Parking:	Yes
Washing machine:	Yes	Utility room/area:	Yes
Terrace:	Yes	Central heating:	Yes
Air conditioning:	Yes	Balcony:	Yes
Lift:	Yes	Furnished:	Yes



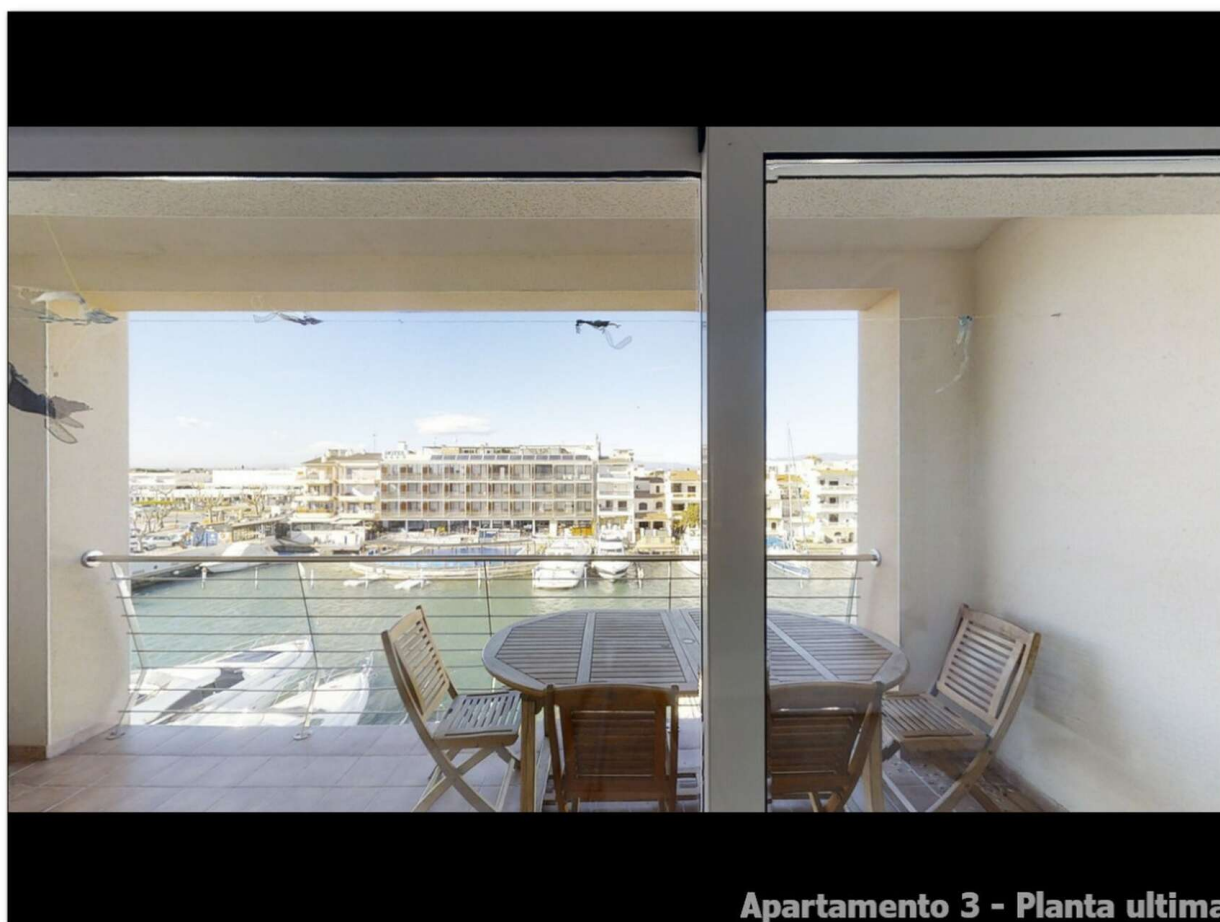
**Bloque de 3 pisos con garaje
y amarre de 20x6m**



**Bloque de 3 pisos con garaje
y amarre de 20x6m**



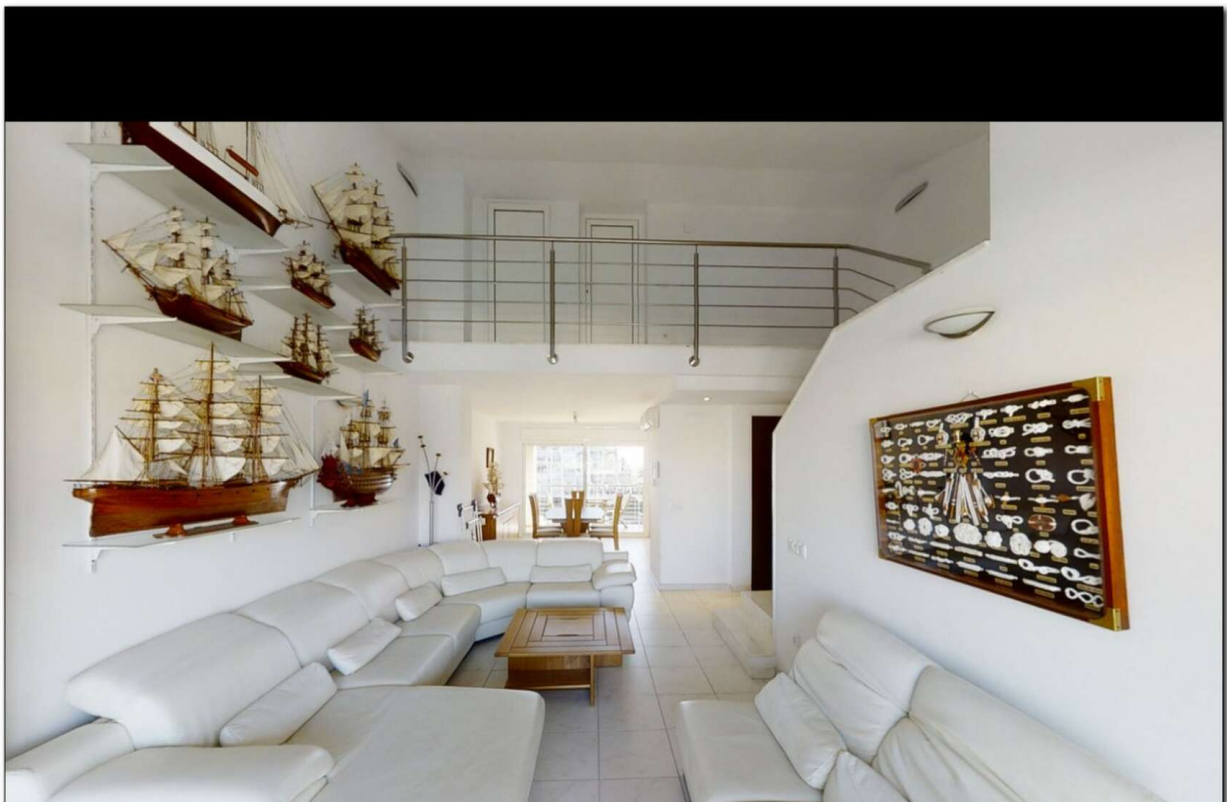
Garaje + Amarre 20x6m



Apartamento 3 - Planta ultima



Apartamento 3 - Planta ultima



Apartamento 3 - Planta ultima